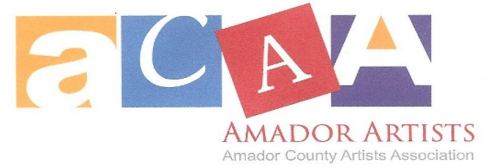


January  
2017



# Newsletter

## Board Members

Marie Martz-Mort,  
*President*

Sandra Campbell,  
*Recording Secretary*

Em Rojas,  
*Corresponding Sec.*

Cynthia Dunn-Selph  
*Treasurer*

Catherine Woodruff

Judy Jackson

Judy Regnier

Amador County Artists Association whose purpose is to promote and encourage the production, cultivation, and appreciation of art.

Happy New Year ACAA members!

I look forward to working with you all to complete the tasks we want to accomplish in 2017. The first of these will be the Student Art Show in May, showcasing the artists of our local high schools. We will need people to participate in the judging, photographing the winning art for an article in the local paper, and producing a brochure of the participating artists. These tasks do not involve a big time commitment, just a couple of days. We will need a new publicity person to advertise the demonstrators, someone to check on our website to make sure it is up to date, other press releases, and web support re: Facebook page. These jobs can all be done by different people, so that no one person has to do everything.

Some of you know that I have been president several times before, to others it will be new. The main difference now is that I have less time to devote to the job and I will need your support.

Marie Martz-Mort incoming President

[www.amadorcountyartists.org](http://www.amadorcountyartists.org)

[Facebook.com/amadorartists](https://www.facebook.com/amadorartists)



### This Month's Meeting

January 11th

Business Meeting

No Demo

### Next General Meeting

February 8th

**Amador Senior Center**

229 New York Ranch Road

Jackson, CA 95642

*Visitors are welcome!*

### Inside this issue:

Art In Public Places 2

Art Trek 3

Announcements 3

Upcoming events 3

Please fill out and return ASAP

Thank you

### ACAA MEMBERSHIP FORM

Membership Dues are due in January. We look forward to your participation.

Make your check payable to:

AMADOR COUNTY ARTIST ASSOCIATION

Send your dues and this membership form to:

CATHERINE WOODRUFF  
17325 Robinson Road  
Sutter Creek, CA 95685

Name(s): \_\_\_\_\_

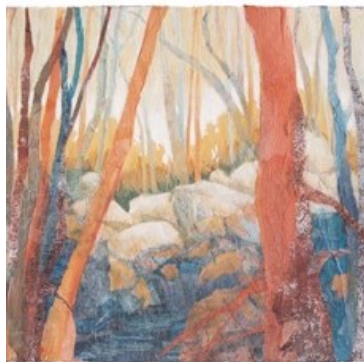
Street: \_\_\_\_\_

City: \_\_\_\_\_ Zip Code: \_\_\_\_\_

Email: \_\_\_\_\_ Telephones: H \_\_\_\_\_ C \_\_\_\_\_

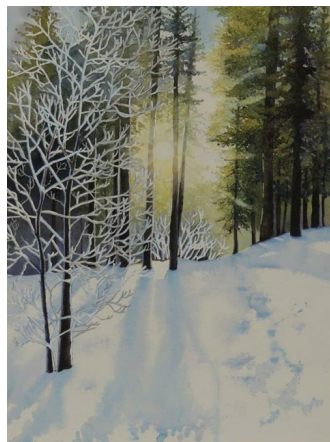
Single Membership \$25 \_\_\_\_\_ Couple or Business Membership \$40 \_\_\_\_\_

# Newsletter



Lynn Slade

*“In art, the hand can never execute anything higher than the heart can imagine.”*  
*Ralph Waldo Emerson*



Wendy Rogers



Wendy Rogers

## Art In Public Places

### The schedule to follow your favorite artists for January and February 2017:

- Castle Oaks Golf Club in Ione: Em Rojas
- Superior Court of Ca. in Jackson: Lynn Slade
- American River Bank of Jackson: D&L Schupp
- Rosebud's Cafe in Jackson: Judy Regnier
- Amador Senior Center in Jackson: Sandra Campbell
- Sierra Eye Care in Jackson: Cynthia Dunn-Selph
- Amador Residential Care in Jackson: B. Clevenger
- Jackson Paint Spot in Jackson: Dorothy Magoffin
- Jackson Main Library: Wendy Ward & Melissa Doyel
- Amador Community College Fndtn: Judy Day
- Kit Carson Senior Center: Donna Plant



Em Rojas

## Art Trek is Saturday January 7th

**Amador Arts Gallery, Sutter Creek**  
209.267.9038 [amadorarts.org](http://amadorarts.org)

Closed for January

**Sutter Creek Gallery, Sutter Creek**  
209.267.0228 [suttercreekgallery.com](http://suttercreekgallery.com)

Wendy Rogers, paintings

**Gallery 10, Sutter Creek**  
209.267.0203 [gallery10suttercreek.com](http://gallery10suttercreek.com)

“A Second Chance”, pre-owned artwork

**Petroglyph Gallery, Mokelumne Hill**  
209.286.1387 [gallerypetroglyphe.com](http://gallerypetroglyphe.com)

**Little City Studio & Gallery, Amador City**  
209.267.9189

**Fine Eye Gallery, Sutter Creek**  
209.267.0571 [fineeye.com](http://fineeye.com)

**Volcano Gallery, Volcano** 209.296.3334

**Add Art, Jackson** 209.223.3339  
John Johannsen, Paintings

**Gifted, Jackson** 209.223.1558 [shopgifted.net](http://shopgifted.net)

**Full Circle Trading Company**  
Jackson 209.223.1214

**Chaos Glassworks, Sutter Creek**  
209.267.9317 [chaosglassworks.com](http://chaosglassworks.com)

**Acme Art , Mokelumne Hill**  
209.286.8040 [acmeartmokehill.com](http://acmeartmokehill.com)

**Shenandoah Vineyards Gallery, Plymouth**  
209.245.4455 [saborwine.com](http://saborwine.com)

**Uphill Vineyards, Amador City**  
707.718.1121 [uphillvineyards.com](http://uphillvineyards.com)

**Charles Spinetta Winery & Wildlife Gallery, Plymouth**  
209.245.3384 [charlesspinettawinery.com](http://charlesspinettawinery.com)

**Amador360, Plymouth**  
209.245.6600 [amador360.com](http://amador360.com)

**Rosebud's Café, Jackson**  
209.257.0227

**Union Inn & Pub, Volcano**  
209.276.7711 [volcanounion.com](http://volcanounion.com)

**Sina's Back Roads Café, Sutter Creek**  
209.267.0440

**For more information go to:**

[amadorarts.org](http://amadorarts.org)



Dear ACAA members,

Correction to Karen Crane's contact information: My email is [kcsoul53@yahoo.com](mailto:kcsoul53@yahoo.com), my facebook is Karen D Crane, and I look forward to keeping up with all of you as you share your work on Facebook! The correct address is 4405 South 3rd Ave, Everett, WA 98203 and the phone is 425-329-9513.

Much love,

Karen

## Wendy Ward's Creative Studio

209.295.2224 [themermaidmuse.com](http://themermaidmuse.com)

Every Monday Open Studio 10am-1pm

**Acme Art** 209.286.8040 [acmeartmokehill.com](http://acmeartmokehill.com)

"Schnickle Art", Wednesday 6 to 8 pm

**Blue Belle Studio** 209 768-8157

Monday to Wednesday 10am to 4pm

[www.bluebellefarm.com](http://www.bluebellefarm.com)

Every Wednesday Open Workshop 11am to 2pm

Please follow my facebook page for updates and additional information. [Facebook.com/LeapinMoon](https://www.facebook.com/LeapinMoon)

**Sutter Creek Gallery's new Creekside Studio is available to rent for classes and events.**  
**209-267-0228 Email: [suttercreekgallery@gmail.com](mailto:suttercreekgallery@gmail.com)**

Art Classes with **Sabina Turner** every Wednesday 9:30am to 12:30pm 209.245.6581 [sabina@sabinaturner.com](mailto:sabina@sabinaturner.com)



Catherine Woodruff

*"The job of the artist is always to  
deepen the mystery."  
-Francis Bacon*

**Send your announcements and pictures to Cynthia Dunn-Selph at [dunnselphc@yahoo.com](mailto:dunnselphc@yahoo.com)  
by the 20th of the month for inclusion in the next month's newsletter.**

## Upcoming Events

Next Art Trek will be Saturday February 4th

Next Meeting will be Wed February 8th



PO Box 358, Jackson, CA 95642

209.296.4880